



# Delaware Stars Revision

Fall 2018



Delaware  
Department of Education

# Mission and Vision

## Vision:

All of Delaware's children and families will have access to quality early care and education programs from birth through school-age.

## Mission/Purpose:

1. Provide public education about the importance of early care and education and Delaware's system for providing quality programs.
2. Design and implement a system that defines and supports quality early care and education.
3. Increase access to quality early care and education programs for all of Delaware's children, with initial focus on increased access for low-income children and their families.

# Revision Process Review

- December '17: Kickoff
- January – May '18: Planning
- June – August '18: Data Collection
- Fall '18: Structural Recommendations
- Winter '18: Refined Recommendations
- FY 2020: Implementation Planning and Standards Review

# Data Sources

- RAND Corporation research report
- Other QRIS evaluation studies
- Community Conversations
- Listening Sessions
- Surveys

# Data Collection Highlights

- Nearly 500 Participants
  - 334 providers responded to the survey
  - 40 stakeholders responded to the survey
  - Approximately 75 providers attended listening sessions
  - Approximately 20 stakeholders attended listening sessions
  - Feedback from Community Conversations also informed data

# Data Collection Highlights

- Standards
  - Useful for guiding improvement efforts
  - Value in requiring certain standards
  - Value in flexibility
  - Moderate positive relationships between *Management and Administration* and *Qualifications and Professional Development* domains and children's cognitive skills
- Assessment and Verification
  - Useful for quality improvement
  - Significant negative qualitative feedback regarding ERS

# Data Collection Highlights

- Training and Technical Assistance
  - T/TA provided is useful
  - T/TA is not provided consistently
  - Frequency of interaction tied to usefulness
- Financial Incentives
  - Useful for improving and maintaining program quality
  - Revoking Tiered Reimbursement (such as when a program is on enforcement action with OCCL) hinders improvement

# Data Collection Highlights

- Parent Education
  - Lowest rated among providers and stakeholders
  - Families are not very familiar with Stars
  - Stars rating is not a factor for families choosing a program
- General Thoughts
  - Concept of State-sponsored, cross-sector framework is embraced and widely supported
  - Family Child Care is different and should be treated as such
  - Stars should align with other systems (Licensing, NAEYC, Head Start, etc.)
  - More interaction (with TA, with other programs, with families) is wanted

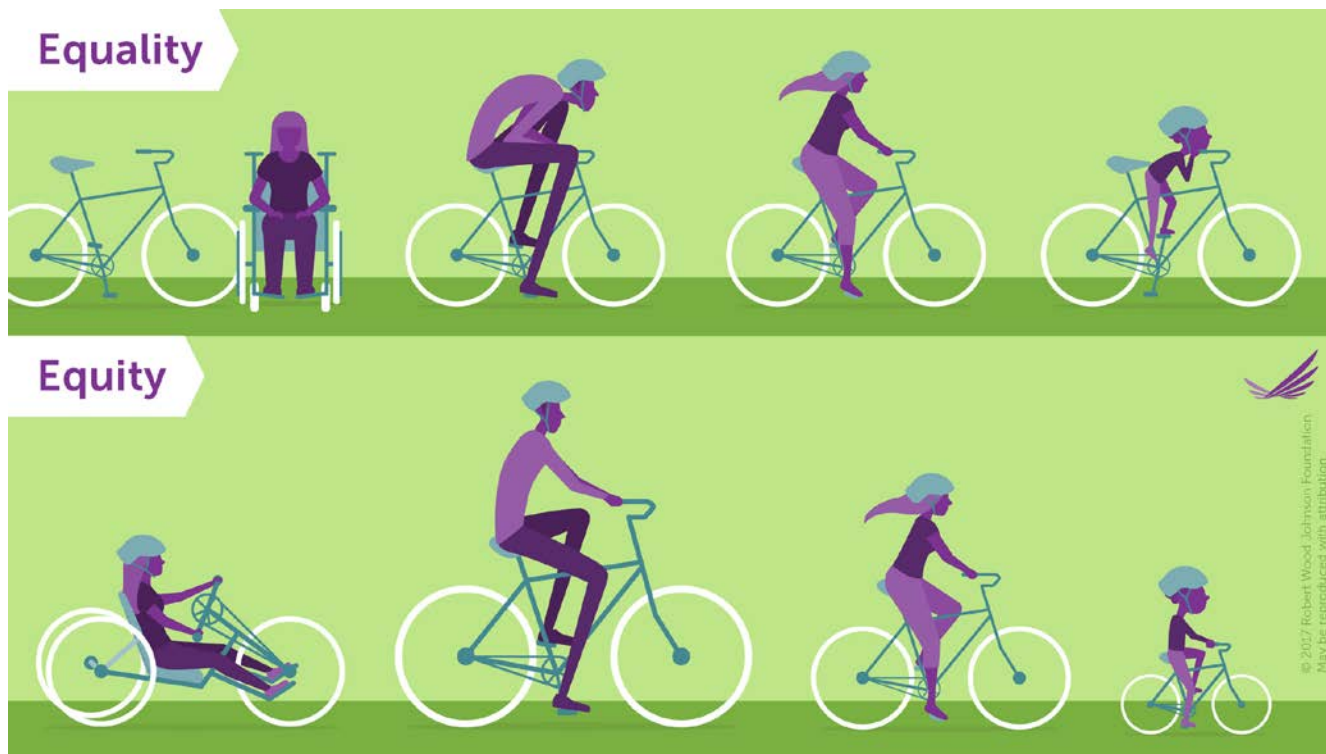


# Guiding Principles

- Existing structure shows improvement in children's executive functioning
- Child Outcomes are not the only indicator of quality
  - Staff Qualifications
  - Environment
  - Parent Engagement
- Continuous Quality Improvement
- Equity must be woven throughout

# Breakout Questions

How do we ensure equity throughout the revised Delaware Stars?



# Breakout Questions

Stars currently uses a hybrid model and has choice-points at lower levels and some required standards at higher levels.

One suggestion is to continue to use a hybrid model, but require specific standards at lower levels and give choice at higher levels.

What supports do you believe programs will need to adjust to a new model?

# Breakout Questions

Parent Engagement is an indicator of quality, yet stakeholders and providers report low engagement and a lack of awareness of Stars among parents.

What role do you think a strong QRIS plays in bolstering parent engagement?